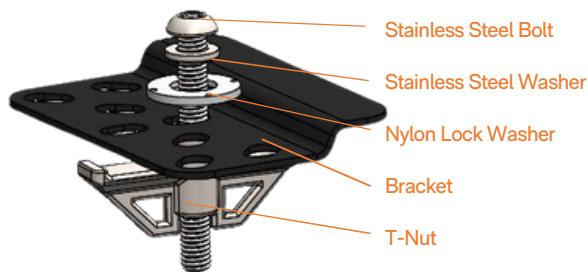


Hog Hearth fastening brackets are designed to securely fasten Hog Hearth heat mats to most types of grated / woven plastic and metal flooring.

CAREFULLY READ INSTRUCTIONS TO AVOID DAMAGING HEATERS DURING INSTALLATION!!!

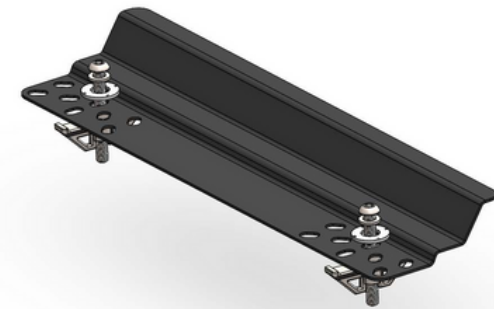


(Standard 3" Bracket)

Hog Hearth standard brackets are designed to secure heat mats in crates where sows do not have access to the edge flange of the heaters. (standard bracket installation requires 4 – 3" brackets)

4 Pc standard bracket sets includes:

- 4 - 2"x 3" (50 x 76mm) Stainless steel brackets
- 4 - T-Style stainless steel nuts
- 4 - Nylon lock washers
- 4 - Stainless steel washers
- 4 - Stainless steel bolts



(12" Extension Bracket)

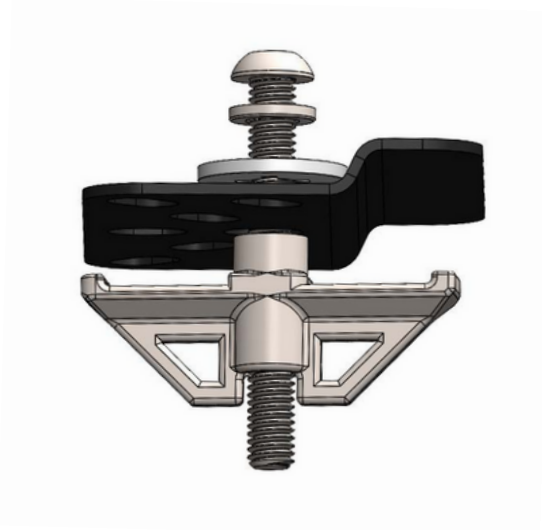
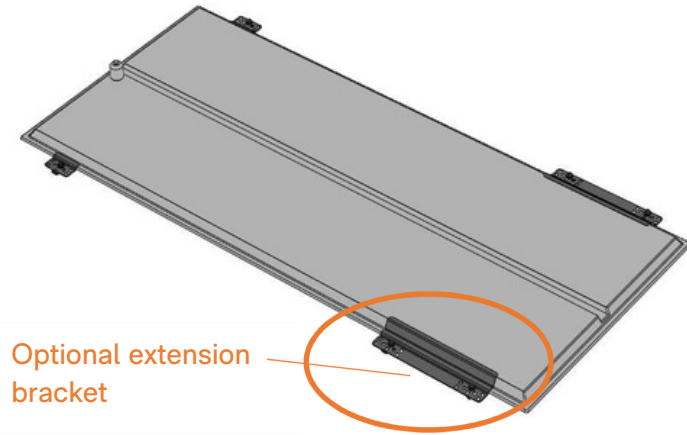
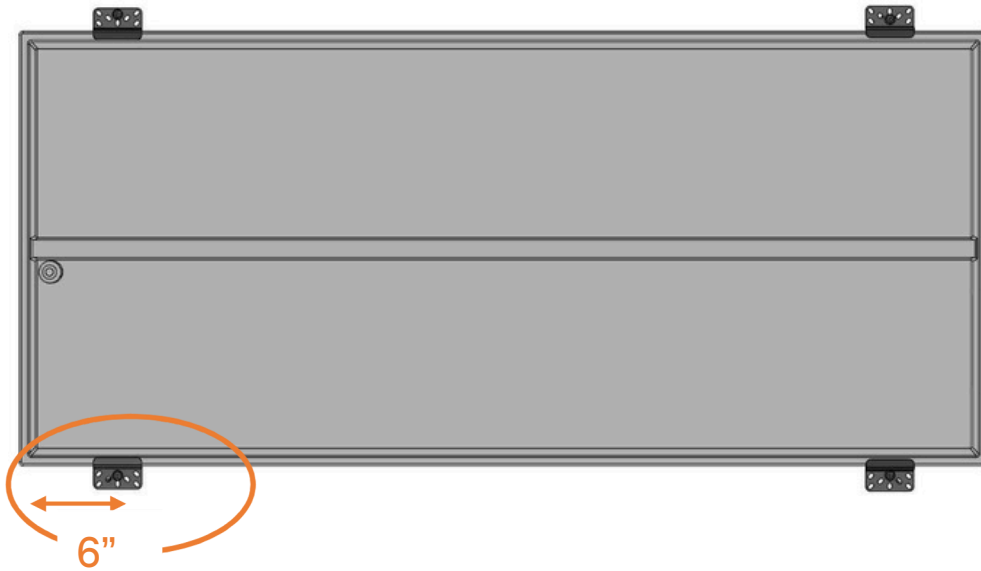
Hog Hearth extension brackets are designed to secure heat mats in crates where sows have access to the edge flange of the heaters. The 12" extension bracket protect the back edge of the heat mats extending the lifespan of the heaters. (extension bracket installation requires 2 – 3" brackets & 2 – 12" extension brackets)

4 Pc extension bracket sets includes:

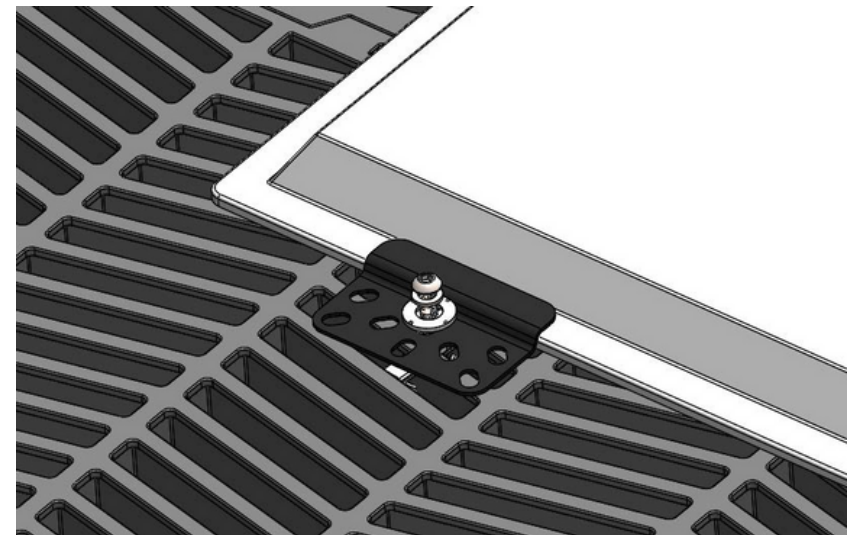
- 2 - 2"x 3" (50 x 76mm) Stainless steel brackets
- 2 - 3"x 12" (76 x 298mm) Stainless steel brackets
- 6 - T-Style stainless steel nuts
- 6 - Nylon lock washers
- 6 - Stainless steel washers
- 6 - Stainless steel bolts

Installation Instructions

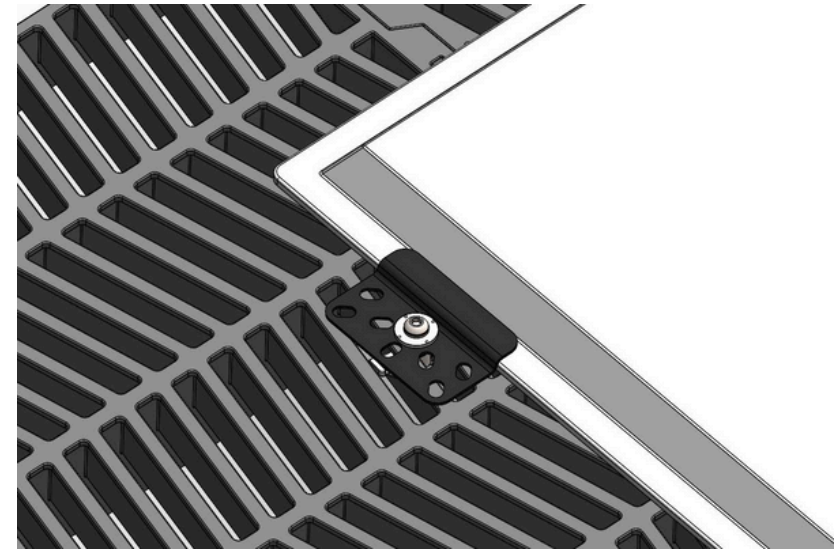
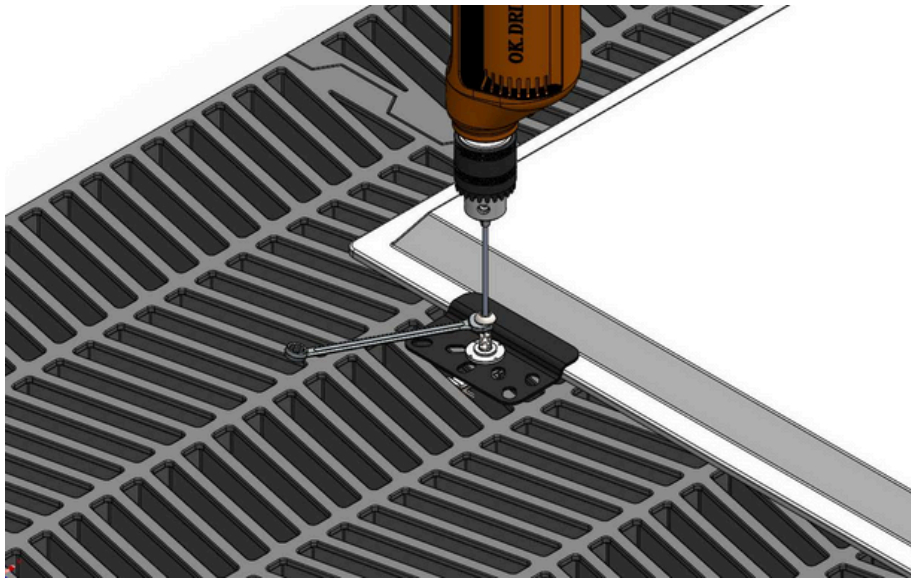
Step 1: Position brackets 6" from heater ends on long edges. Optional extension brackets are installed at the back end of the heat mat.



Step 2: Assemble T nut and washers together with brackets

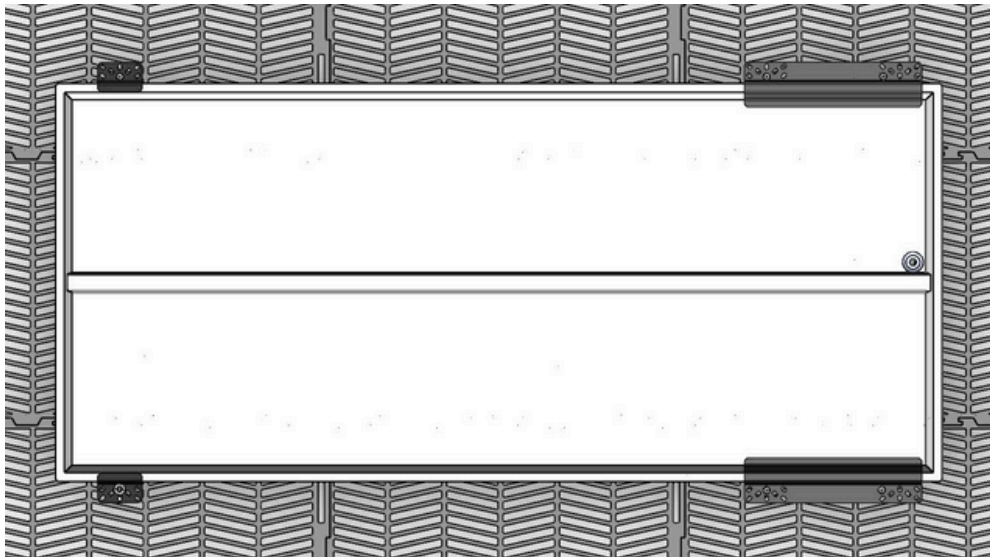


Step 3: Place Bracket and bolt-nut assembly in their designated location.



Step 4: Raise the bolt and slide the nylon and stainless steel washers downward. Position the T-Nut's edge protrusion between the floor holes to prevent it from rotating. Finally, use a drill to securely fasten the bolt. **OVERTIGHTENING NUT WILL CAUSE DAMAGE TO THE EDGE OF THE HEAT MAT OR T-NUT. DO NOT USE AN IMPACT DRIVER TO FASTEN HARDWARE.**

When properly installed, the bracket should hold the heater firmly in position. The flange under the bracket should not be bent or warped under pressure.



Installation complete!

Note: It is recommended that you re-tighten the bolts after the first week of use to ensure they have not come loose.